

# RIVESTIMENTI

Gli articoli illustrati possono essere soggetti a variazioni

## MODRONE FABRIC



400



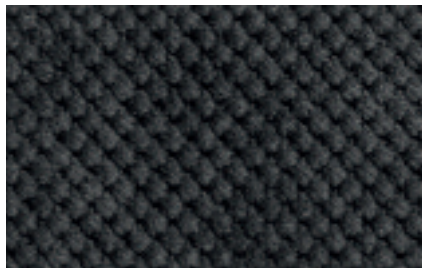
405



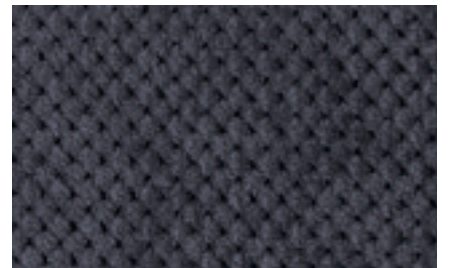
001



100



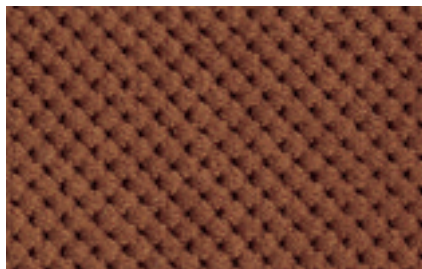
603



200



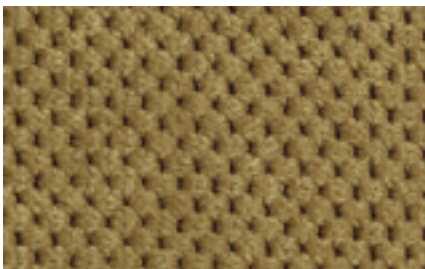
401



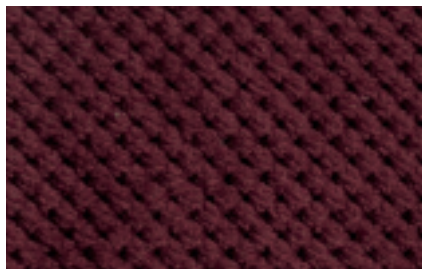
301



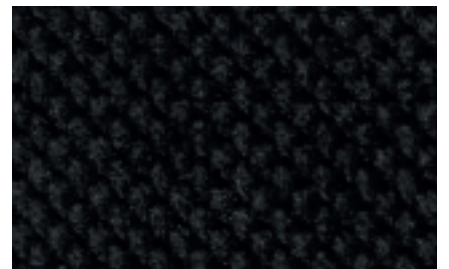
101



502



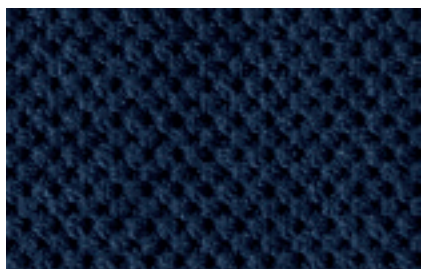
400



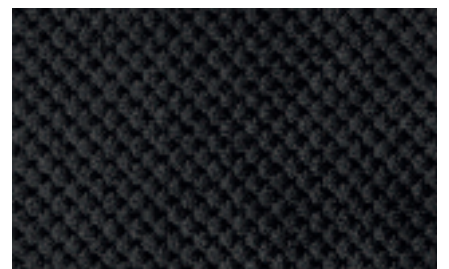
200



803



705



601

# MODRONE

trattamento  
nanotecnologia

IDROREPELENTE  
IRRESTRINGIBILE

SMACCHIABILE

LAVABILE IN LAVATRICE

RESISTENTE ALLE MACCHIE ACQUOSE E OLEOSE

Modrone è un tessuto unico ed innovativo per la praticità, la facile manutenzione, l'aspetto gradevole, i colori luminosi di tendenza.

Lo speciale trattamento che nasce dalla nano-tecnologia di nuova generazione rende il tessuto traspirante, idro ed olio repellente, cioè impedisce ai liquidi di penetrare all'interno del tessuto e quindi consente all'imbottitura di rimanere asciutta garantendo così la massima igiene.

Inoltre tutte queste caratteristiche rimangono inalterate.

Modrone è un tessuto che per la sua versatilità, offre soluzioni attente alle esigenze del vivere contemporaneo garantendo un perfetto equilibrio tra estetica ed efficacia, confort e performance, igiene e sicurezza.

*Modrone is a unique and innovative fabric for its practicality, easy care, pleasurable look and bright and trendy colours. The special treatment which comes from new generation nano-technology makes Modrone breathable, hydro and oil repellent, which prevents liquids from penetrating inside the tissue and therefore allows the upholstery to stay dry, thus ensuring maximum hygiene.*

*Moreover all these features remain unchanged.*

*Modrone is a fabric which thanks to its versatility offers solutions focusing on the needs of contemporary life, ensuring a perfect balance between aesthetics and efficiency, comfort and performance, hygiene and safety.*

Composizione : 90%PL 8%PA 2%CO

Composition :

Altezza : 140 cm

Width :

Peso : 357 gr/mq  $\pm$  4%

Weight :

Restistenza all'abrasione >30.000 giri/rubs

Abrasion resistance (Martindale)

Punto finale n° cicli End point (ISO 12947-2)

Resistenza al Pilling 4/5

Pilling Resistance (ISO 12945-2)

Solidità del colore allo sfregamento: A SECCO / DRY 4/5

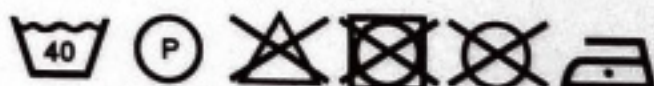
Colourfastness (ISO 105-X12) A UMIDO / WET 4/5

Solidità delle tinte alla luce : 4/5

Resistance to light : (ISO 105-B02)

Norme di manutenzione:

Cleaning: (ISO 3758)



## Cuoio rigenerato / regenerated leather



bianco / white



nero / black



avorio / ivory



rosso / red



fumo / smoke



testa di moro / dark brown



beige



blu / blue



ghiaccio / ice



terracotta / brick



naturale / natural



vinaccia / dark red

## Ecopelle / Eco-leather



bianco / white



nero / black



avorio / ivory

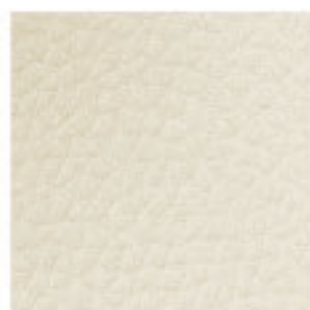


rosso / red

## ***Ecopelle / eco-leather***



1



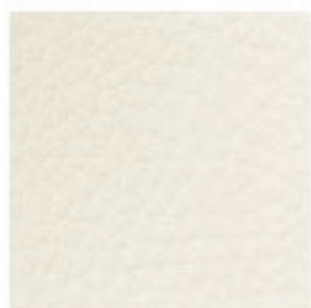
6



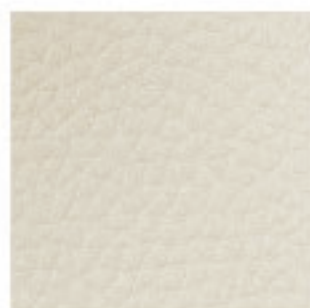
11



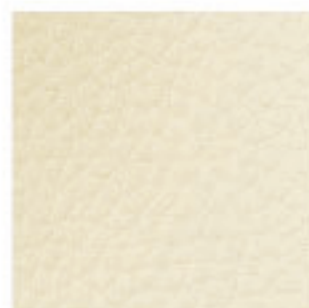
16



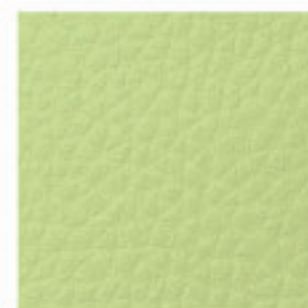
2



7



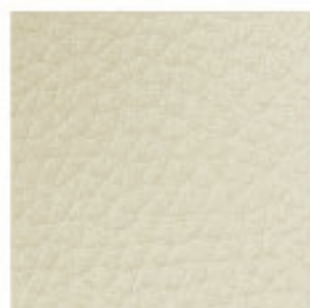
12



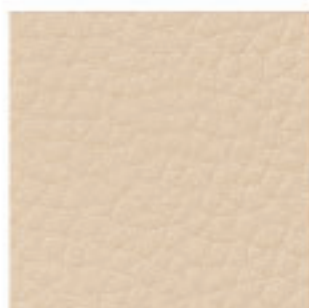
17



3



8



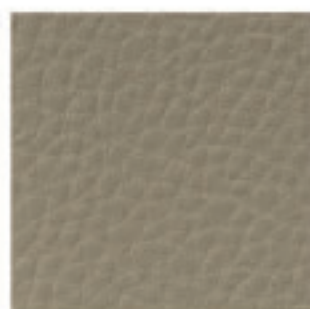
13



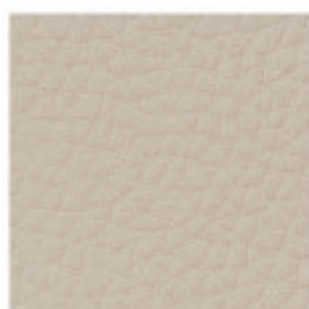
18



4



9



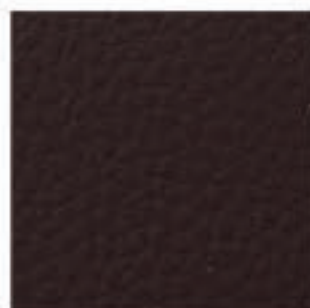
14



19



5



10



15



20



21



26



31



22



27



32



23



28



33



24



29



34



25



30



35